



MK4 RADIAL BLADE TOW CUTTER

Maximum Capacity: 2,000,000 total denier @ 43mm blade exposure and 38mm cut length when cutting polyester

Range of Tow Speed: 60 to 350 meters per minute

Motor/Drive: Variable speed AC inverter drive mounted on cutter
10 HP (7.5 kw), inverter capable motor mounted on cutter
Dynamic Braking
Belt driven

Voltage: 380/460 Volts, 3Ph, 50/60Hz

Tow Height: 1,220mm (48"); 1,448mm (57") is available

Process direction: Right to Left **Or** Left to Right

Blade Exposure: **43mm** including a phenolic presser wheel

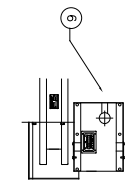
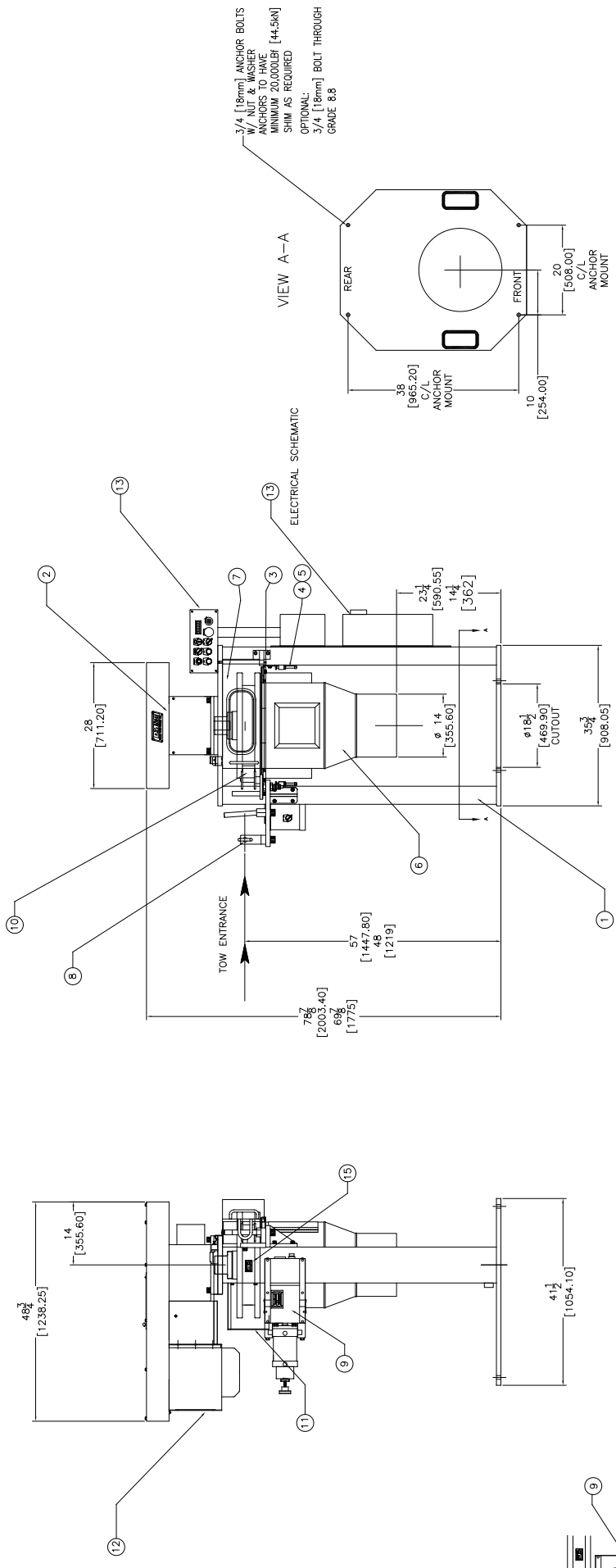
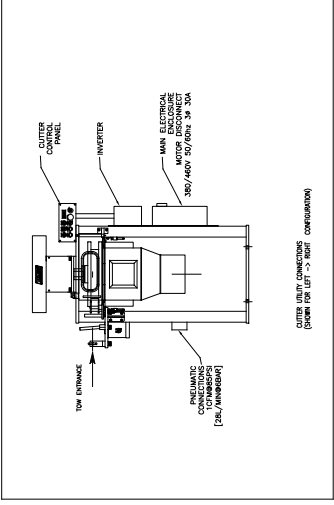
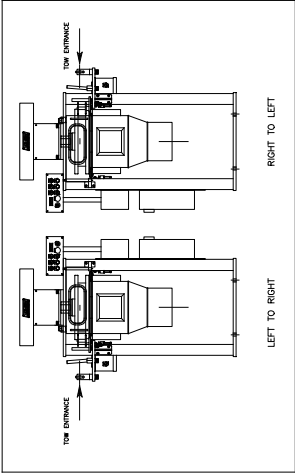
Controls: An Operator console is mounted to the MK4 cutter. Operator functions include:

- **Run** - Push Button
- **Run/Jog** - Selector
- **Stop** - Push Button
- **% Speed Control** - potentiometer
- **E-stop** - push/pull button
- **Tension On/Off** - Selector
- **Speed Meter** - Digital Speed Meter
- **Presser Wheel** - adjustable regulator and gauge
- **Presser Wheel In** and **Out** - selector switch
- **Reel Up/Down** - selector switch (used only on RAD equipped cutters)
- **RAD Operate** - push button (used only on RAD equipped cutters)
- **Cutting Load Meter** - digital load display/alarms

Special features integrated on the DM&E MK4 Tow Cutter include:

- 250mm diameter pneumatically actuated presser wheel
- Captive Bolt cutter reel attachment
- Basic Tow Guide System
- Swing-open reel guard with safety switch
- Stainless steel doff plate and discharge duct
- Carbon steel construction with powder coat protective finish
- DM&E Mk4 Tow Cutters are supplied completely assembled, ready for customer installation less radial blade cutter reel(s) and blades.

WEIGHT (APPROXIMATE)
 CUTTER: 2,000 LBS. [907.2 Kg.]



ORIGINAL MANUAL PRESSER WHEEL ASM.

LEFT TO RIGHT OPERATION AS SHOWN
 RIGHT TO LEFT OPERATION OPPOSITE

ITEM NO.	DESCRIPTION	QTY	UNIT	REVISION	DATE	BY	CHKD
1	CUTTER	1	EA	1	11/15/22	JK	JK
2	ORIGINAL MANUFACTURER'S PART NO.						
3	ORIGINAL MANUFACTURER'S PART NO.						
4	ORIGINAL MANUFACTURER'S PART NO.						
5	ORIGINAL MANUFACTURER'S PART NO.						
6	ORIGINAL MANUFACTURER'S PART NO.						
7	ORIGINAL MANUFACTURER'S PART NO.						
8	ORIGINAL MANUFACTURER'S PART NO.						
9	ORIGINAL MANUFACTURER'S PART NO.						
10	ORIGINAL MANUFACTURER'S PART NO.						
11	ORIGINAL MANUFACTURER'S PART NO.						
12	ORIGINAL MANUFACTURER'S PART NO.						
13	ORIGINAL MANUFACTURER'S PART NO.						
14	ORIGINAL MANUFACTURER'S PART NO.						
15	ORIGINAL MANUFACTURER'S PART NO.						