

MK5 RADIAL BLADE TOW CUTTER

Maximum Capacity: 5,000,000 total denier @ 85mm blade exposure and 51mm cut length

Range of Tow Speed: 60 to 350 meters per minute

Motor/Drive: Variable speed AC inverter drive mounted on cutter
20 HP (15 kw), inverter capable motor mounted on cutter
Dynamic Braking
Belt driven

Voltage: 380/460 Volts, 3Ph, 50/60Hz

Tow Height: 1,220mm (48"); 1,448mm (57") is available

Process direction: Right to Left **Or** Left to Right

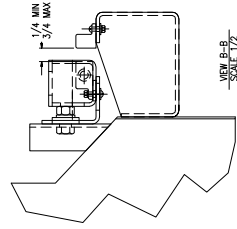
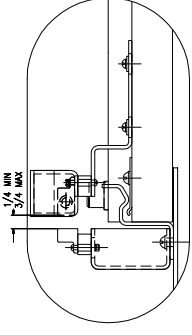
Blade Exposure: **85mm** including a phenolic presser wheel

Controls: An Operator console is mounted to the MK5 cutter. Operator functions include:

- **Run** - Push Button
- **Run/Jog** - Selector
- **Stop** - Push Button
- **% Speed Control** - potentiometer
- **E-stop** - push/pull button
- **Tension On/Off** - Selector
- **Speed Meter** - Digital Speed Meter
- **Presser Wheel** - adjustable regulator and gauge
- **Presser Wheel In and Out** - selector switch
- **Reel Up/Down** - selector switch (used only on RAD equipped cutters)
- **RAD Operate** - push button (used only on RAD equipped cutters)
- **Cutting Load Meter** - digital load display/alarms

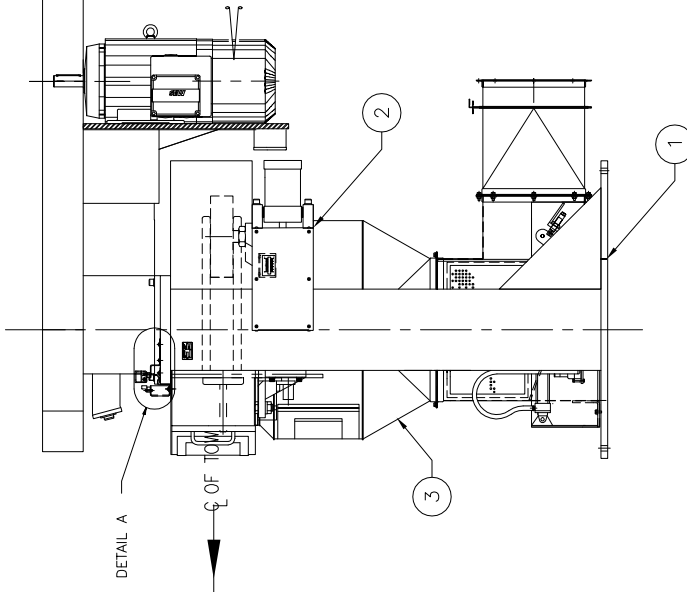
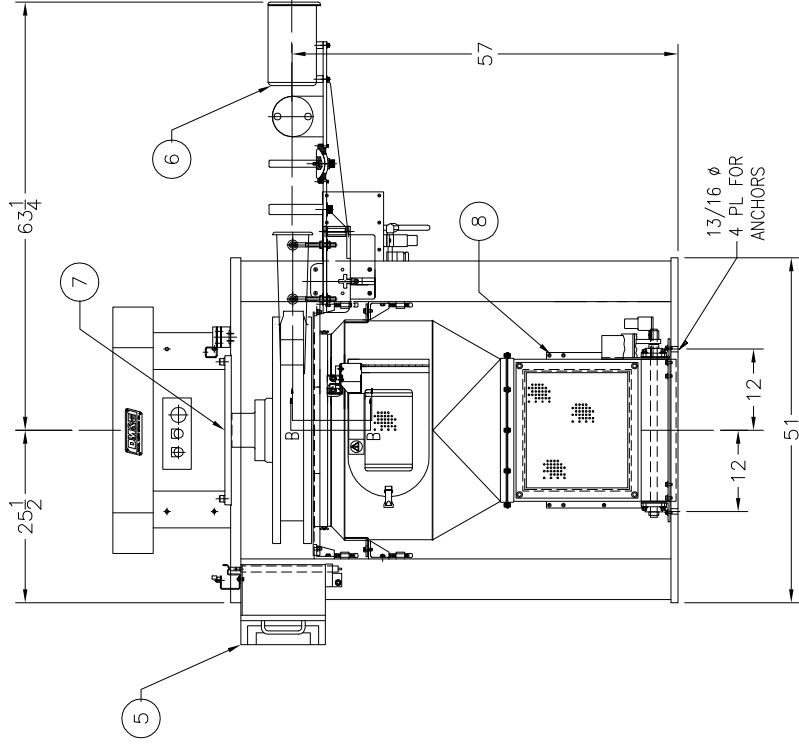
Special features integrated on the DM&E MK4 Tow Cutter include:

- 300mm diameter pneumatically actuated presser wheel
- Captive Bolt cutter reel attachment
- Basic Tow Guide System
- Swing-open reel guard with safety switch
- Stainless steel doff plate and discharge duct
- Carbon steel construction with powder coat protective finish
- DM&E Mk5 Tow Cutters are supplied completely assembled, ready for customer installation less radial blade cutter reel(s) and blades.



DETAIL A
SCALE 1/2

VIEW B
SCALE 1/2



RIGHT HAND ASSEMBLY SHOWN
LEFT HAND OPPOSITE

7			CHK: EAS	
6			DRN: RGS	
5			DATE: 01/26/17	
4			PLATING: -	
3			HEAT TREAT: -	
2			SCALE: 1:16	
1				
REV.	DESCRIPTION	ENG.	DATE	REV.

DIMENSIONAL TOLERANCES (UNLESS OTHERWISE SPECIFIED)	INCH	MILLIMETER	MATERIAL: -
DECIMALS	.X	±.020	±.50
.XX	±.010	±.25	
.XXX	±.005	±.13	
.XXXX	±.001	±.025	
FRACTIONS	±1/64	ANGLES	±0'30"

ALL CONTENTS ARE PROPERTY OF DM&E CORP.
 BE REPRODUCED OR TRANSMITTED IN ANY FORM OR BY ANY MEANS,
 WITHOUT WRITTEN PERMISSION OF DM&E CORP.
 DRAWINGS AND SPECIFICATIONS RELEASED FOR CONSTRUCTION MUST BE RETURNED AFTER COMPLETION OF ORDER.

1. INTERPRET SYMBOLS PER ANSI Y14.5M-1982.
2. DEBURR & BREAK ALL SHARP EDGES & CORNERS .017/.03 R. OR 45° CHAMFER.
3. C'SINK ALL TAPPED HOLES 1-1/2 PITCH x 80°/90°.
4. DIMENSIONAL TOLERANCES APPLY AFTER PLATING.
5. ETCH OR STAMP DRAWING NUMBER & REVISION LEVEL ON SURFACE WITH SYMBOL: [MARK] IF APPLICABLE.
6. SURFACE FINISHES 125√ UNLESS OTHERWISE NOTED.

DM&E CORPORATION	DM&E	TITLE: MK5 CUTTER RIGHT TO LEFT LAYOUT	
SHELBY NORTH CAROLINA, USA DM&ECUTTER.COM		DRAWING NUMBER: 800-052-D	REV.: 0