

WA SERIES TOW CRIMPER

Process:

- Horizontal flow
- Drive speed: 250 meters per minute
- Tow Height: 1,448 mm
- Process direction: Right to Left or Left to Right

Crimper Rolls:

- Bi-laterally supported roll shafts with roller bearings
- Pneumatically regulated roll pressure
- Roll Material: 440C stainless steel, hardened to Rc 55
- Roll Diameter: 150mm nominal
- Roll Shaft Material: Precipitation hardening stainless steel
- Roll Width: 50-125mm
- Rolls are equipped for internal fluid circulation

Stuffing Box:

- Pneumatically regulated Stuffing Box pressure
- Replaceable doctor blade tips
- Material: Heat-treated stainless steel, hardened to Rc 40
- Stuffing Box Width: 50-125mm
- Height: Up to 35mm

Cheek Plates (Thrust Pads):

- Pneumatically regulated pressure
- Cheek plate (thrust pad) variable speed rotation
- Brass alloy inserts – quantity (2) per crimper
- Designed for ease of replacement

WA Crimper Motor/Drive:

- Variable speed AC inverter drive mounted on crimper
- Energy efficient, inverter duty, 380V/460V, 50hz/60hz, 3ph motor
- Crimper Control Console mounted on Crimper
- Drive pulleys
- Drive belt
- Adjustable motor base
- Belt Guard
- Interconnecting Panel

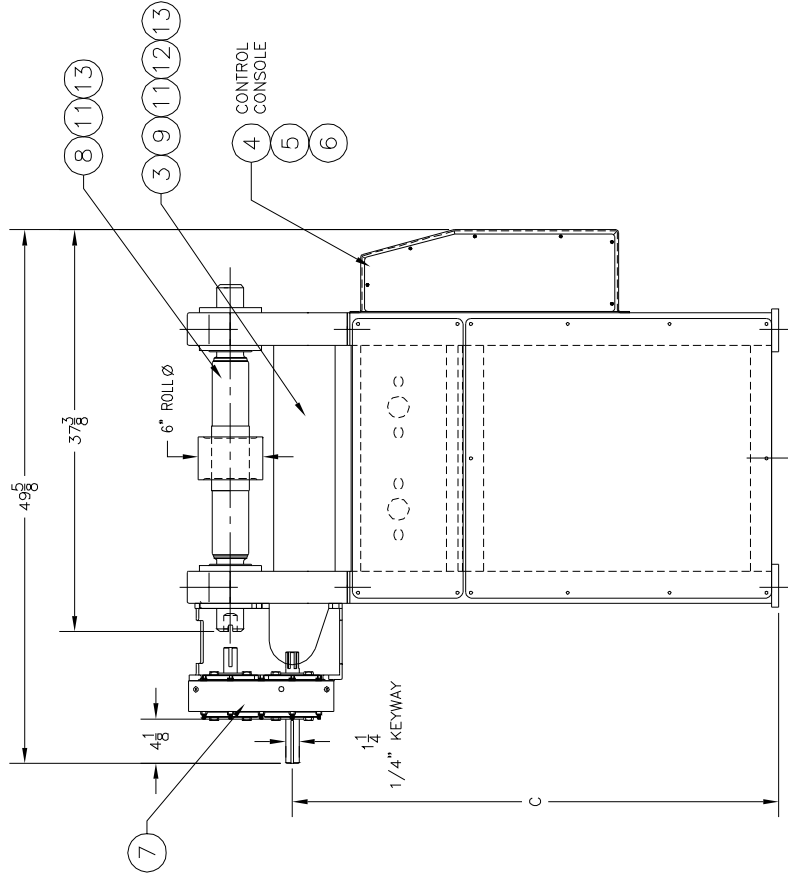
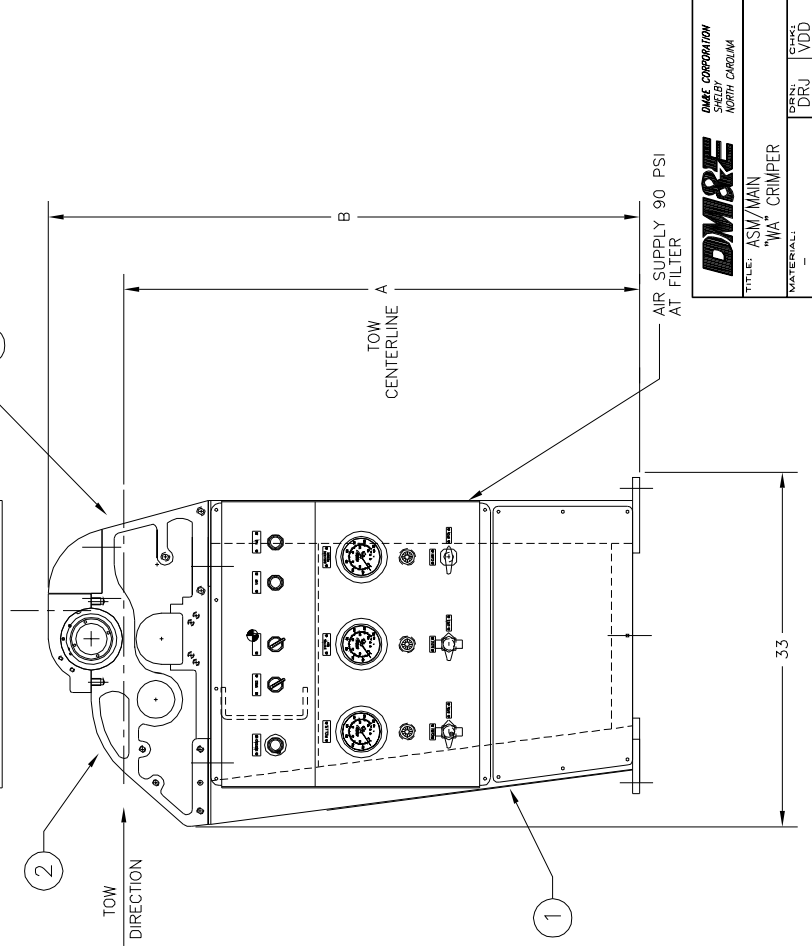
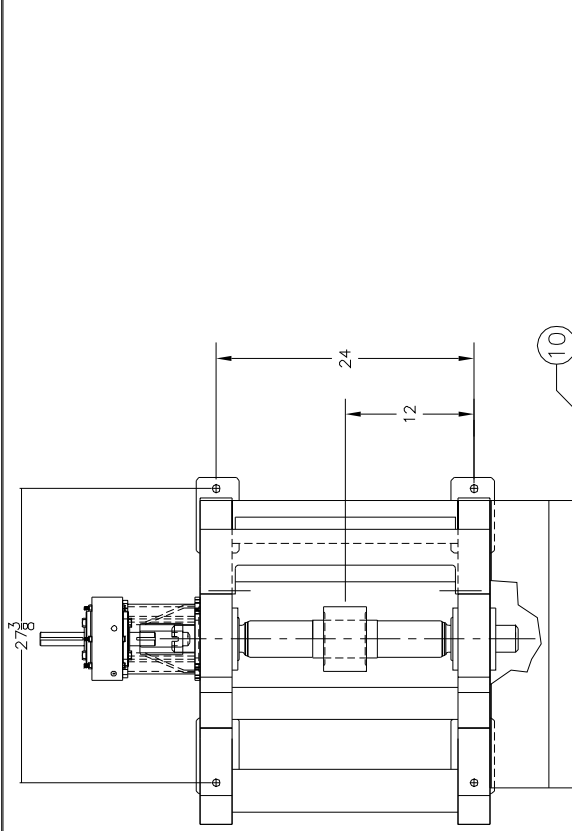
Dimensions:

- 33x38x55" [84x97x140xm]
- 1500 lb [680 kg]

WA Dancer available to regulate incoming tow tension

Complete and ready for installation including motor, drive, pulleys, belt and guard

PART#	DESCRIPTION	DIM A	DIM B	DIM C
204-298-01-C	48" TOW HEIGHT WITH NO FLOOR SHIM	48"	55"	45 1/4"
204-298-02-C	48" TOW HEIGHT WITH 1" FLOOR SHIM	47"	54"	44 1/4"
204-298-03-C	1200 MM TOW HEIGHT WITH 1" FLOOR SHIM	46.2" (1526MM)	53.2"	43.45"



DIMENSIONAL TOLERANCES (UNLESS OTHERWISE SPECIFIED)	DIMENSIONAL TOLERANCES	
	DECIMALS	INCH
1. HOLE	±.020	±.50
2. HOLE	±.010	±.25
3. HOLE	±.005	±.13
4. HOLE	±.001	±.075

1. INTERRET SYMBOLS PER ANSI Y14.2M-1982.
 2. DEBURR & BREAK ALL SHARP EDGES & CORNERS.
 3. CHAMF ALL TAPPED HOLES 1-1/2 PITCH X 80°/90°.
 4. BEFORE TAPPING.
 5. TYPICAL TOLERANCES APPLY AFTER PLATING.

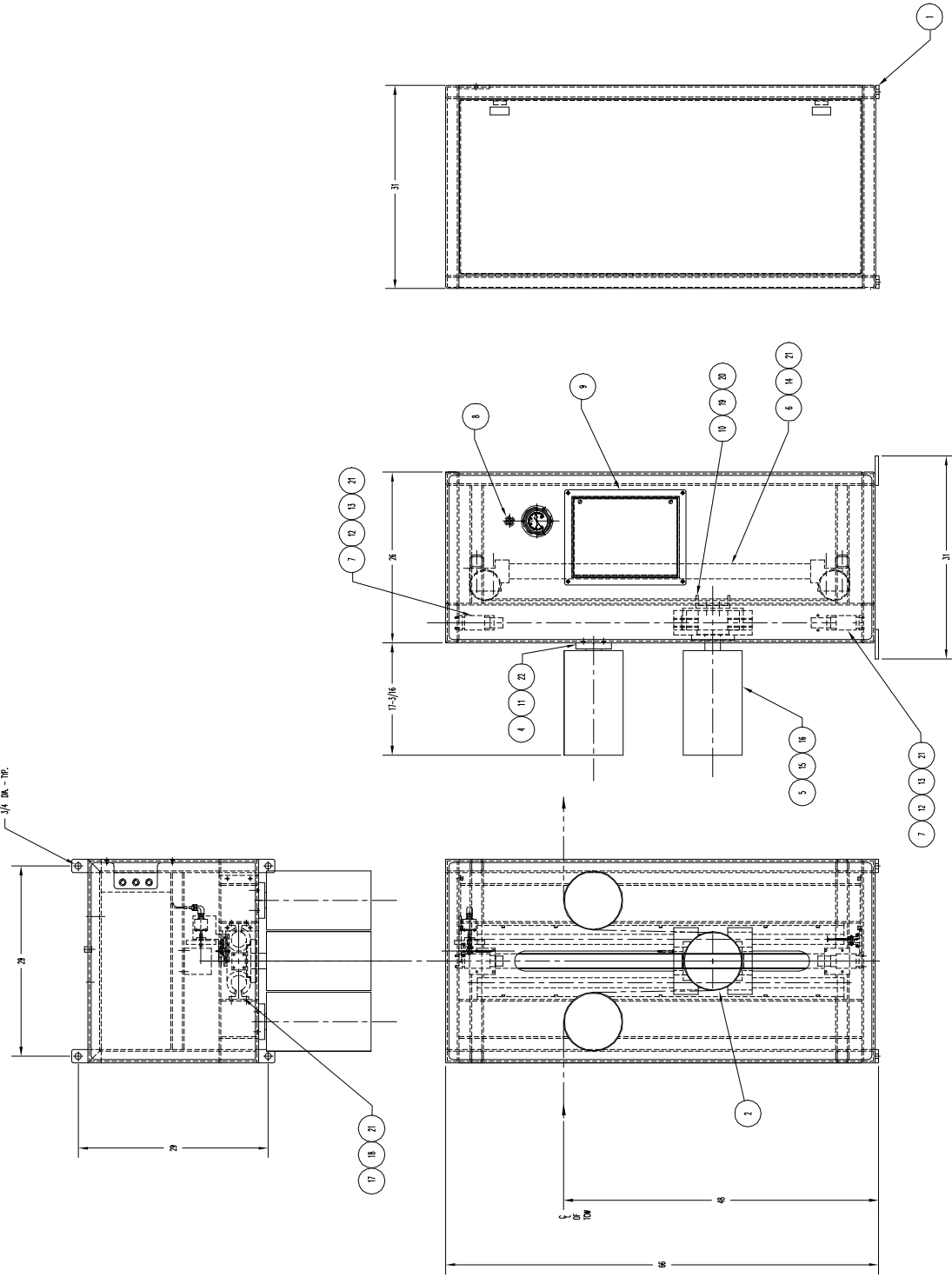
DM&E
 TITLE: ASM/MAIN
 "WA" CRIMPER

DRN:	VDD
DATE:	4-4-86
SCALE:	1/8" = 1"

DRAWING NUMBER: 204-298-C
 REV: 3

NOTE:
 1. APPROXIMATE MACHINE WEIGHT - 2,000 POUNDS
 2. LEFT TO RIGHT OPERATION SHOWN

3/4 DIA. - P/B



REV	DESCRIPTION	DATE	BY	CHKD
1	ISSUED FOR FABRICATION	11/15/80	J. J. [unclear]	[unclear]
2	REVISION	11/15/80	J. J. [unclear]	[unclear]
3	REVISION	11/15/80	J. J. [unclear]	[unclear]
4	REVISION	11/15/80	J. J. [unclear]	[unclear]
5	REVISION	11/15/80	J. J. [unclear]	[unclear]
6	REVISION	11/15/80	J. J. [unclear]	[unclear]
7	REVISION	11/15/80	J. J. [unclear]	[unclear]
8	REVISION	11/15/80	J. J. [unclear]	[unclear]
9	REVISION	11/15/80	J. J. [unclear]	[unclear]
10	REVISION	11/15/80	J. J. [unclear]	[unclear]
11	REVISION	11/15/80	J. J. [unclear]	[unclear]
12	REVISION	11/15/80	J. J. [unclear]	[unclear]
13	REVISION	11/15/80	J. J. [unclear]	[unclear]
14	REVISION	11/15/80	J. J. [unclear]	[unclear]
15	REVISION	11/15/80	J. J. [unclear]	[unclear]
16	REVISION	11/15/80	J. J. [unclear]	[unclear]
17	REVISION	11/15/80	J. J. [unclear]	[unclear]
18	REVISION	11/15/80	J. J. [unclear]	[unclear]
19	REVISION	11/15/80	J. J. [unclear]	[unclear]
20	REVISION	11/15/80	J. J. [unclear]	[unclear]
21	REVISION	11/15/80	J. J. [unclear]	[unclear]
22	REVISION	11/15/80	J. J. [unclear]	[unclear]

DMRE
 THE COMPANY
 THE MAIN ASSEMBLY
 WA DANCER

DATE	11/15/80
BY	J. J. [unclear]
CHKD	[unclear]
REV	0

460-170-D